



Health
Innovation
Manchester

Accelerating innovation across
Greater Manchester





Health
Innovation
Manchester

We work with innovators to

discover, develop and deploy

new solutions that improve the health
and wellbeing of Greater Manchester's
citizens.



Our Members

Health Innovation Manchester is a system working across GM health research, innovation and life sciences

Commissioners
and providers

Academia and
research

Industry
Partnerships

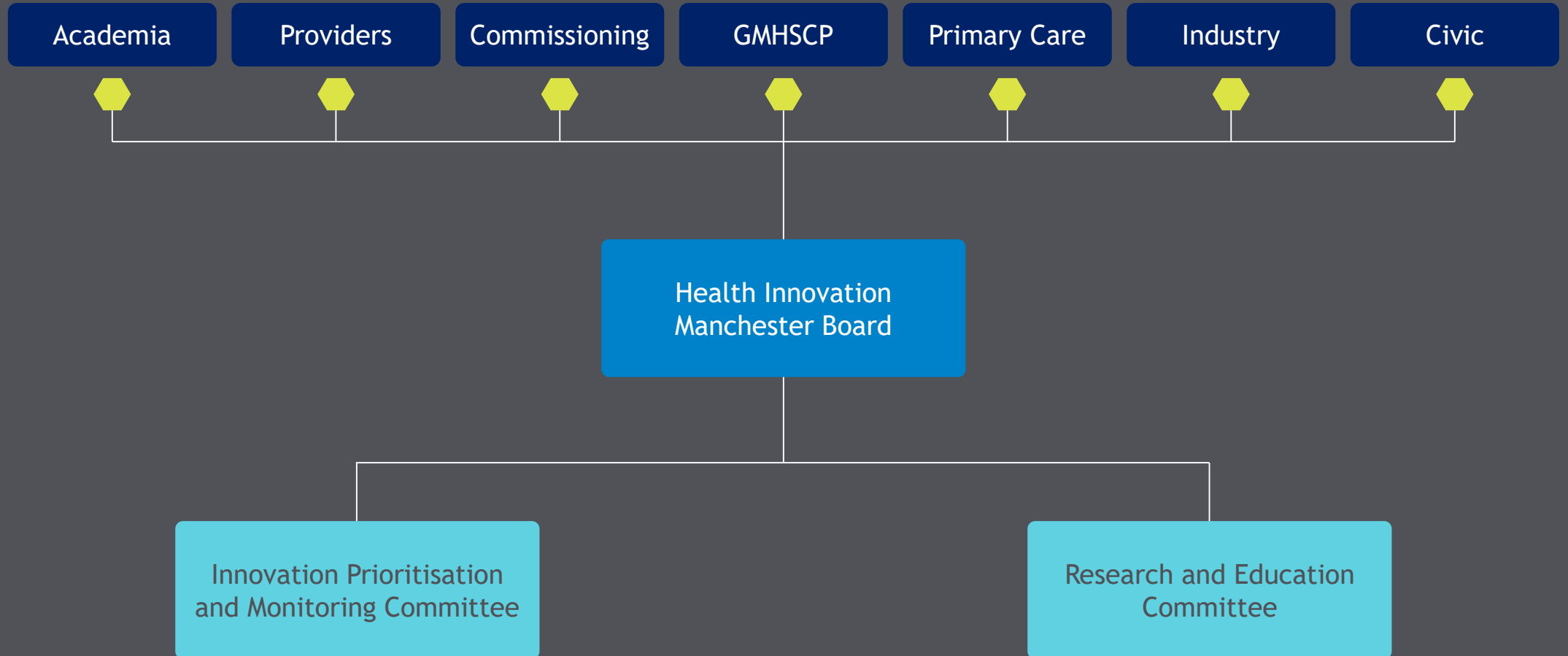
National agencies
and government

Inward
Investment





HInM - Governance and commissioners





Strategic aims

Our vision is to become a recognised international leader in accelerating innovation that transforms the health and wellbeing of our citizens.



Ensure a constant innovation pipeline into health and social care.



Prioritise and monitor innovation activities that meet the needs of GM.



Accelerate delivery of innovation into health, care and wellness delivery.



Amplify existing academic and industry value propositions.



Influence national and international policy.



We have an active innovation portfolio

More than 90 innovation projects covering tech, pharma, digital, academia and research themes.



Innovation deployment

17 Greater Manchester programmes

National Innovation Accelerators

Cardiovascular disease

Healthy Hearts

21 National programmes

Respiratory

Mental Health

Gastroenterology

Cancer

Medicines Optimisation

Patient Safety

Precision medicine



We have an active innovation portfolio

More than 90 innovation projects covering tech, pharma, digital, academia and research themes.



Research

GM Research Hub

Academic engagement

Bid and grant support

Translational research

6 Research domains:

Inflammation and repair

Women and children's

Cardiovascular

Cancer

Mental health

Neuroscience

Cross cutting:

Digital

Applied health

Precision health



We have an active innovation portfolio

More than 90 innovation projects covering tech, pharma, digital, academia and research themes.



Digital transformation

Supporting GM
Digital Strategy

NICE DataLab

GM shared care
record implementation

Digital innovation hub

Utilisation management

Digital health accelerators



We have an active innovation portfolio

More than 90 innovation projects covering tech, pharma, digital, academia and research themes.



Industry partnerships

GM Industrial Strategy

Economic growth

Innovation pipeline

ABPI partnership

SME innovation funds

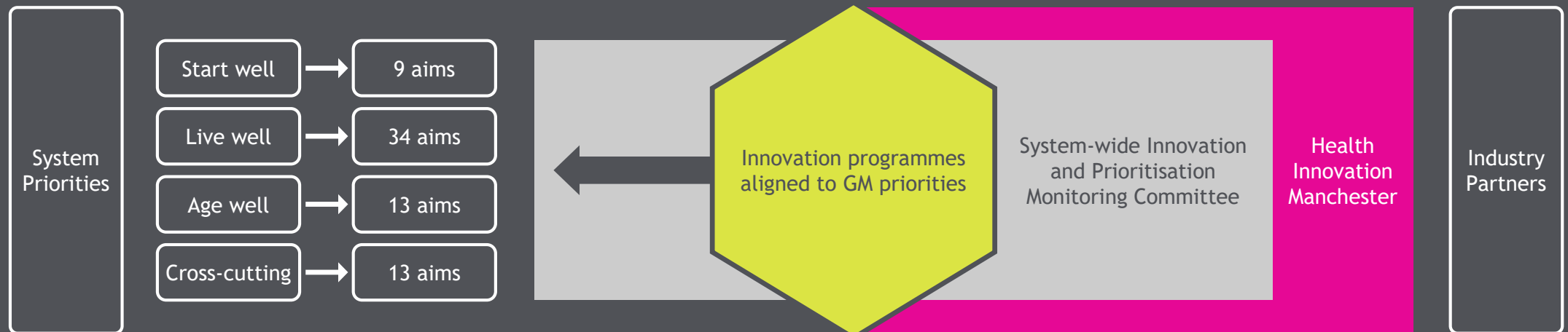
ABHI partnership


ERDF funded projects



Aligning innovation to the needs of Greater Manchester

A system-wide approach to the qualification, assessment and prioritisation of innovations within the health and social care system





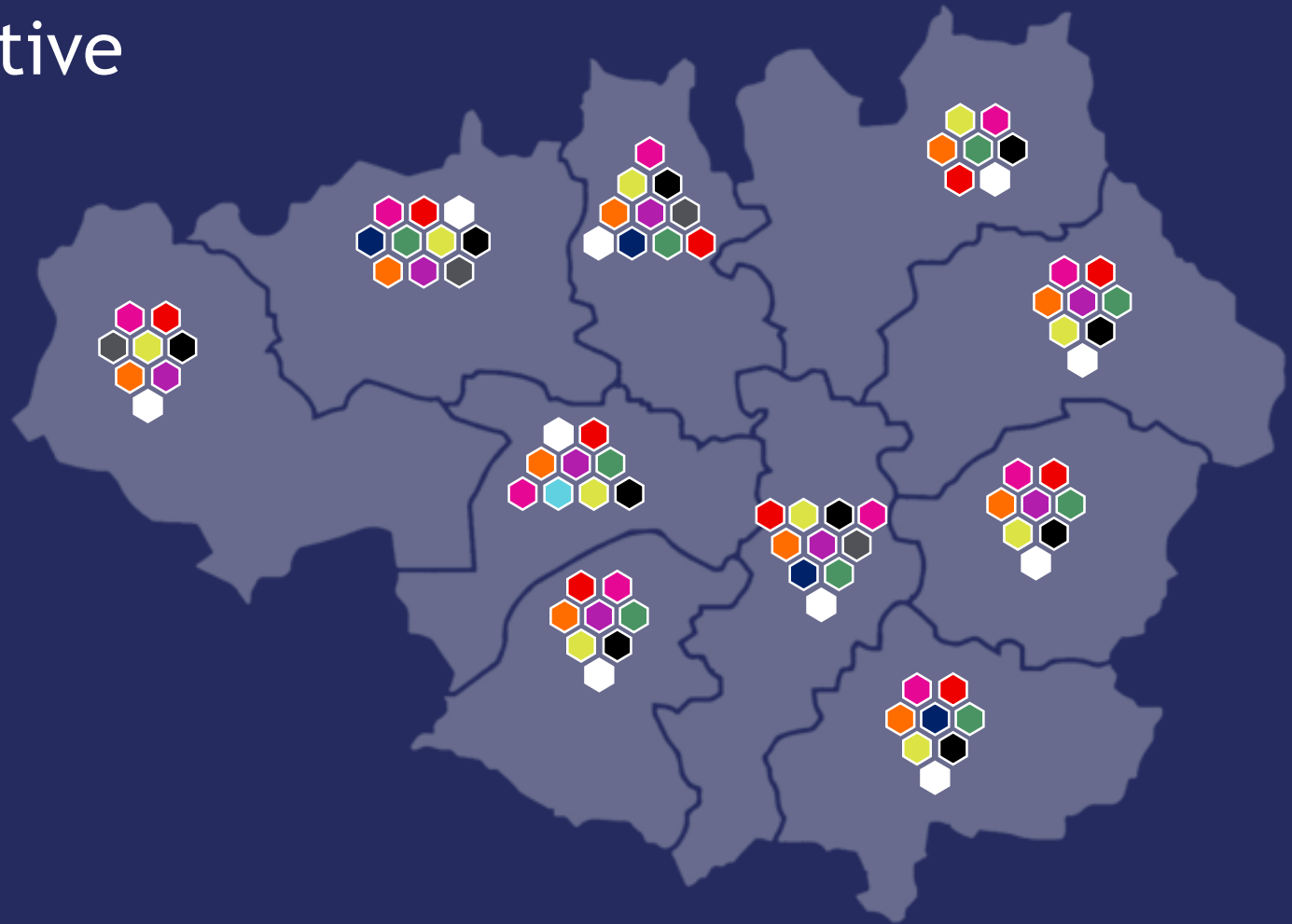
A systematic approach to translation and adoption through the health and social care system





A wide range of innovation programmes are now active across all 10 localities

- | | | | |
|---|------------------------------|---|----------------------------------|
|  | Patient Safety Collaborative |  | Healthy Hearts |
|  | Musculoskeletal |  | Medicines Optimisation |
|  | Gastroenterology |  | Respiratory |
|  | Maternity |  | Quality Improvement |
|  | Mental Health |  | National Innovation Accelerators |
|  | Precision Medicine | | |





Innovation programme snapshots



COPD

Primary care based reviews preventing exacerbations, reducing hospital admissions by 730 per year, 10,000 patient stepped down from triple therapy and medicines optimised for 13,000 patients. Work activity on-going in all 10 localities. Further work required to achieve full implementation.



PINCER

Pharmacist lead technology intervention to reduce levels of general practice prescribing errors. Reduces prescribing errors, reduction in patient harm, reduced hospital readmissions. Annual cost saving of £3k per GP practice. Currently working with 9 localities, need to fully implement and spread across GM.



Escape pain

Community based intervention by physiotherapist for people with osteoarthritis. Currently in 7 localities and expect to treat 120 participants this year, saving £16k per participant. Look to extend spread and adoption across GM.



Innovation programme snapshots



Healthy Hearts

Encompassing AF, Lipids, Hypertension and FH targeted. To work towards target to reduce deaths from CVD in Manchester, avoiding 200 strokes over next 2 years and 800 MI's by identifying those at highest risk of heart attack or stroke and optimize treatment at scale - requires greater spread across GM.



PReCePT

Reducing cerebral palsy by using magnesium sulphate for women at risk of pre-term delivery. Improved quality of life for the child and system savings of circa £1m per child across their life. Currently working with 6 localities, need to fully implement and then spread adoption across GM.



Rainbow clinics

Specialist care service for women after stillbirth onwards into subsequent pregnancy. Improves clinical outcomes for women with history of stillbirths. Currently working with 3 units, will work to upscale across all GM maternity units.



Innovation programme snapshots



TCAM

Establishing a pathway between acute and community pharmacy, for patients requiring additional support with their medicines. Benefits are improved medication adherence, reduced hospital re-admission avoiding 10,000 bed days over 2 years. Currently fully adopted in 1 trust - need to spread adoption - potential GM saving of £2.5m pa for 9 trusts.



Fragility, falls and fractures

This is a locality trial in Tameside & Glossop identifying frail patients at high risk of fall/fractures. Reducing hospital admissions for falls and fractures and improved quality of life. Alignment to GM Strategy working across localities.

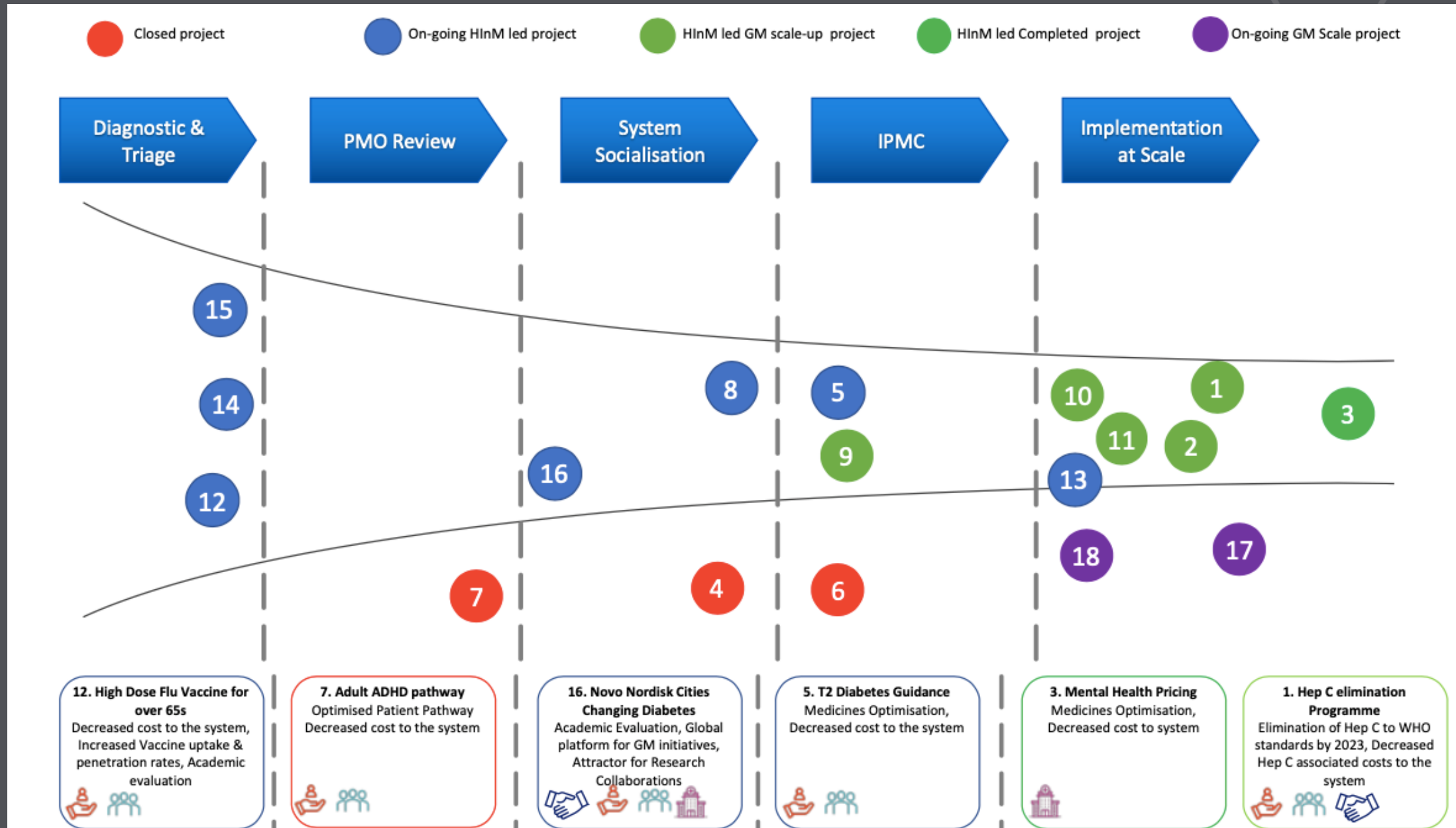


Patient Safety Collaborative

Driving improvement across the system to ensure patient safety is embedded throughout GM health and social care community. Key areas of focus are Maternity and Neonatal, deteriorating patient and culture and leadership. Actively working with all 10 localities - needs fully embedding across GM.



Industry engagement - HInM activity under ABPI MOU





And digital transformation in practice: GM HDRUK Exemplar sprint project - heart failure

WHY

Patients with heart failure have poor quality of life, high mortality and a cost to the NHS in GM through hospital admission alone of £17M PA

Global Medtech are seeking innovative ecosystems to develop and test new models of care for heart failure

City region supporting and developing local healthcare digital SMEs

HDRUK seeking insights and experience to inform the architecture of the LS sector deal Digital Innovation Hubs

WHAT

Extract evidence of early deterioration in patients with existing heart failure

Develop, evaluate and commission a new model of care to optimize outcomes and maintain people in normal place of residence

Refine existing algorithms and increase population who will benefit from new services

HOW

Flow IoT data on to cloud platform and integrate with health records

Establish heart failure at home service run from acute provider on behalf of locality

Use AI for algorithm enhancement and missed opportunity detection



Systems of Engagement

Heart failure at home service



Systems of Insight

Business Intelligence
Predictive Analytics



Systems of Record

IoT | GP | Hospitals
Social Care



Infrastructure

Cloud



Health
Innovation
Manchester

wearehinm.co.uk
[@HealthInnovMcr](https://twitter.com/HealthInnovMcr)

